

# THE CLOCK

The weekly newlsetter of Longford CofE Primary School

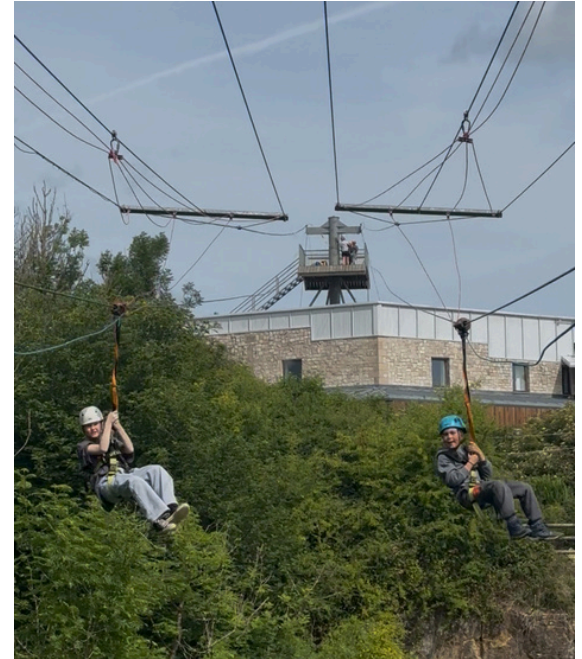
Tel: 01335 330364

Email: [info@longford.derbyshire.sch.uk](mailto:info@longford.derbyshire.sch.uk)

[www.longford.derbyshire.sch.uk](http://www.longford.derbyshire.sch.uk)



Friday 20<sup>th</sup> June 2025



## This Week's News from Mrs Piper-Hadfield:

It has been a busy couple of weeks across school, which has included the Y5/6 Residential and the KS2 Halle Performance. More details regarding these are below, but I will just say here how brilliantly the children have behaved and how lovely it is seeing them participate in a range of different opportunities and experiences, giving it their all!

You will have of course seen the letter sent out on Wednesday re the class structure for next year, but if you haven't, please do have a read of that. We have our second reception transition morning next week which we are looking forward to.

Just a reminder that Monday is an inset day and so school is closed to pupils.

## Sparkler Awards:

**Noah and James Y1** for love of learning - nominated by Mrs Whitney

**Seren Y4** for effort and dedication - nominated by Karim

**Harriet Y4** for respect - nominated by Mrs Clarke

**Inaya Y4** for effort and love of learning - nominated by Mrs Clarke

**Oliver Y5** for effort and determination - nominated by Mrs Bailey

## Mount Cook

The Owls had a marvellous time on their residential, taking part in a wide range of activities, from orienteering and bushcraft to the zip wire and rock climbing. Honourable mention goes out to the chocolate cake too, which is always a highlight...! I am so proud of how the children behaved and the determination they showed in each activity. A huge thank you to Mrs Redfern for staffing the trip, as well as Mrs Riley and Mrs Bailey.

## Halle Performance

Yesterday, the whole of KS2 went to Derby Arena to take part in 'Come and Play with the Halle', where they joined together with multiple schools to create one big orchestra!

Y3-6 have been practising the flute in their music lessons this year and so it was a great opportunity for them to showcase this, alongside other schools across Derbyshire.

## Pupil Voice - Results

We recently carried out a trust-wide pupil voice survey, centering around the trust's core values of Family, Integrity, Teamwork & Success. The results of this survey are extremely positive and give us great insight into what the children value most about school. I have attached Question 1 below as it is too wonderful not to share. My favourite response is, 'It feels like another home' - what more could we want?! Their responses show just how important our school values are to them.

We're also pleased to see just how much they enjoy our village walks, which will of course continue next year.

**Question 1 - FAMILY:**

### How do I know that I am part of my school family?



### Whole School Walks and Buddy Systems

- A significant number of children mentioned *whole school walks*, which take place regularly.
- These walks often include *pairing with younger children* or “buddies” (e.g., Robins), fostering cross-age friendships and mentoring.
- These shared experiences are seen as unifying and supportive:  
*“We team up with other children (our buddies).”*

💙 **Helping Each Other and Showing Kindness**

- Children emphasised a strong culture of *helping one another*, especially when someone is stuck or in need of a friend.
- Responses highlighted everyday kindness and support:
  - *"Everyone is happy to always help someone."*
  - *"We help each other out if we're stuck on something."*
  - *"Kind to each other, always help each other."*
- Acts of kindness, both structured and spontaneous, contribute to the school's caring environment.

### Collective Worship and Shared Values

- *Collective worship* is regularly mentioned as a whole-school practice that brings everyone together.

- Pupils frequently referenced the importance of *school values*, which are visibly upheld in daily life:
  - *“Every day, we all show our school values.”*
  - *“We all follow our school values.”*

### Uniform and Unity

- Many responses noted that *wearing the same school uniform* helps children feel equal, united, and part of a bigger whole:
  - *“We wear the same uniform to show unity.”*
  - *“School uniform... never leave others out.”*

## Friendship, Play, and Inclusion

- Children feel included through shared experiences in *play*, *learning*, and forming *friendships*:
  - *“Play together.”*
  - *“Learn, make friends, have fun.”*
  - *“Everyone is joining in.”*
  - *“Never leave others out.”*

 **A School Family**

- Several pupils explicitly referred to school as a *family* or *another home*, describing a strong emotional connection to their environment:
  - *"I feel that I am a part of the school family because I get treated very well."*
  - *"It feels like another home."*
  - *"We are all friends and do activities together."*

# UPCOMING DATES & EVENTS

## NEXT WEEK:

**Monday** - Inset Day

**Tuesday** - Y3/4 QEGS Rounders

**Wednesday** - Reception transition morning (including lunch)

**Friday** - Y6 Space Centre trip

## NEXT TERM:

**Monday 23<sup>rd</sup> June** - Trust Inset (school closed to all pupils)

**Tuesday 24<sup>th</sup> June** - Y3&4 QEGS Rounders

**Wednesday 25<sup>th</sup> June** - New Reception Transition Morning

**Friday 27<sup>th</sup> June** - Y5/6 topic trip

**Friday 4<sup>th</sup> July** - Sports Day

**Tuesday 8<sup>th</sup> & Wednesday 9<sup>th</sup> July** - whole-school + QEGS transition days

**Wednesday 16<sup>th</sup> July** - Longford Games

**Monday 21<sup>st</sup> July** - whole-school walk (families invited), 2pm

**Tuesday 22<sup>nd</sup> July** - Speech and Sparkle , 2pm

**Wednesday 23<sup>rd</sup> July** - Y6 Leavers' Service, 2.30pm + last day of term

## AFTER SCHOOL CLUBS:

**Monday** - Lego until 4.15pm

**Tuesday** - Cricket & Rounders (Primary Stars\*) until 4.30pm

**Wednesday** - Creative (Miss Beresford) until 4.30pm

**Thursday** - TBC (Primary Stars) until 4.30pm

**Friday** - Games (Miss Beresford) until 4.15pm

\*Booked directly with Primary Stars



## Reminders!

**Monday** - school closed to pupils

**Tuesday** - Y3/4 Rounders (PE kits)

**Friday** - Y5/6 school trip